



***NC-360 - NC-440 Capstan
Installation and user's manual***



INDEX

- Introduction	3
- Installing the capstan	4
- Use of the capstan	5
- Maintenance	6
- Warranty conditions	7



INTRODUCTION

Read this manual thoroughly before installation and using the windlass. Failure to adhere to the correct procedures, recommendations and guidelines described in this Owner's Manual may invalidate the warranty.

Be mindful that the correct selection of windlass for each application, together with correct installation, normal care in use and maintenance, are essential for long life and reliable performance.

Inspect your capstan carefully when unpacked. Any damage or lack of components should be reported immediately to your MZ Electronic S.r.l. distributor.

The connection of the power lines and control circuitry to the capstan must be done by skilled technicians, to ensure reliable and safe operation of the capstan.

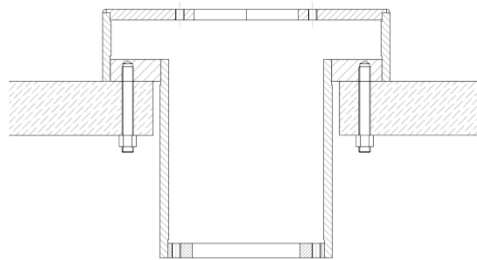
INSTALLING THE CAPSTAN

Extra care should be exercised when handling polished parts to avoid any damage to polished surfaces. Apply an anti-seize compound generously over thread of all screws, before fastening them.

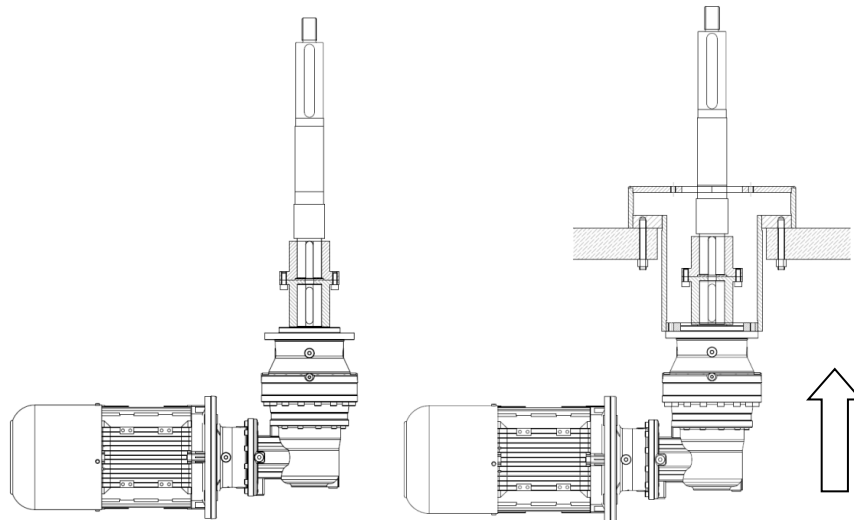
To install in the vessel:

Mount the capstan on the deck:

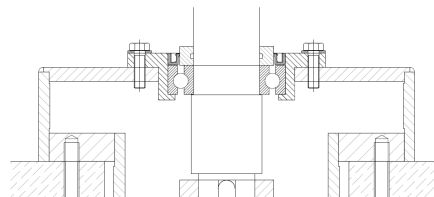
1. Fix the capstan base to the deck in the needed position by welding or screws.



2. Lift the motor-gearbox from the bottom into the base in the needed position and fix it by supplied screws.



3. From the top fix the bearing and seal holder on the base



4. Insert the drum on the shaft and screw completely the top cap.

ATTENTION: Apply grease to the main shaft and on each screw before fit all the parts.



USE OF THE CAPSTAN

MZ Electronic S.r.l. recommends all warping operations be controlled by the footswitch. That makes it a one-person operation and offers better control of the capstan in case of emergency.

Take several turns of the warping line around the drum and pull on the rope tail with sufficient manual force to provide good grip of the line to the drum, whilst operating the footswitch.

Do not engage more turns on the drum than are necessary to accomplish the task. Whilst docking, wind and tide can impose sudden and excessive line tension, which it is often recommended to be managed by allowing slip to occur at the drum. This will protect the capstan, docking lines and vessel from damage.



CAPSTAN MAINTENANCE

EVERY SIX MONTHS

Remove capstan and from the Main Shaft

Inspect all the seals and replace if necessary.

Clean all components inspect them for damage and excessive wear, re-grease and reassemble.

Use Lithium complex base - waterproof grease for screw threads, Main Shaft and Key.

Inspect under deck components, check particularly for corrosion, chipped paint etc, clean, and touch up the paint if necessary.



WARRANTY CONDITIONS

MZ Electronic S.r.l. warrants that in normal private pleasure boat usage and with proper maintenance its products will conform with their specification for a period of two years from the date of purchase by the end user, subject to the conditions, limitations and exceptions listed below. Any product which proves to be defective in normal usage during that two-year period, will be repaired or, as determined by MZ Electronic S.r.l., replaced.

CONDITIONS AND LIMITATIONS:

MZ Electronic S.r.l.'s liability shall be limited to repair or replacement of parts of the product which are defective in materials or workmanship.

MZ Electronic S.r.l. shall not be liable in any way for Product failure, or any resulting loss or damage that arises from:

- use of a product in an application for which it was not designed or intended
- corrosion, ultra violet degradation or wear and tear
- a failure to service or maintain the product in accordance with MZ Electronic S.r.l.'s recommendations faulty or deficient installation of the product
- any modification or alteration of the product
- conditions that exceed the product's performance specifications or safe working loads

Product subject to a warranty claim must be returned to the MZ Electronic S.r.l. outlet that supplied the product for examination unless otherwise approved by MZ Electronic S.r.l. in writing.

This warranty does not cover any incidental costs incurred for the investigation, removal, carriage, transport or installation of product.

Service by anyone other than authorized MZ Electronic S.r.l. representatives shall void this warranty.

MZ Electronic S.r.l.'s products are intended for use only in the marine environment. MZ Electronic S.r.l. accepts no liability arising from such other use.

EXCEPTIONS

Cover under this Warranty is limited to a period of one year from the date of purchase by the end user in the case of any of the following products or parts of products:

- Products used in commercial or charter applications

LIABILITY

MZ Electronic S.r.l.'s liability under this warranty shall be to the exclusion of all other warranties or liabilities (to the extent permitted by law). In particular (but without limitation): MZ Electronic S.r.l. shall not be liable for:

- Any loss of anticipated turnover or profit or indirect, consequential or economic loss
- Damages, costs or expenses payable to any third party
- Any damage to yachts or equipment
- Death or personal injury (unless caused by MZ Electronic S.r.l.'s negligence).

This warranty sets out your specific legal rights allowed by MZ Electronic; these may be varied by the laws of different counties. In addition, the purchaser may have other legal rights which vary from country to country.

PROCEDURE

Notice of a claim for service under this warranty shall be made promptly and in writing by the end user to the MZ Electronic S.r.l. outlet that supplied the product or to MZ Electronic S.r.l. Via Bainsizza 2, 20900 Monza Italy . Proof of purchase and authorization from MZ Electronic S.r.l. will be required prior to any repairs being attempted.

To be eligible for warranty protection, please either complete the form below at the time of purchase and return it to Mz Electronic. Or fill out the electronic warranty form on our website, www.mzelectronic.it.



Officina Navale NANNI S.r.l con socio unico

Sito: <http://www.italwinch.com> - E-mail: info@mzelectronic.it



PRODUCT COMPLIANT WITH EC REGULATIONS

Distributed and Manufactured by:

MZ Electronic S.r.l.

info@mzelectronic.it

www.mzelectronic.it

